

# Serene



## True Low Air Loss and Alternating Air Pressure Redistribution Mattress System

Dual Modes - The Ultimate Solution

### Sexton Trading Company Pty. Ltd.

ABN 68 009 829 485

72 Crockford Street,

NORTHGATE QLD 4013

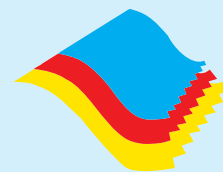
PO Box 135 Hamilton Qld 4007 Australia

**Telephone: (07) 3265 9999**

Facsimile: (07) 3260 6079

Email: [sales@sexton.com.au](mailto:sales@sexton.com.au)

[www.sexton.com.au](http://www.sexton.com.au)



# SEXTON

Quality Management System  
Certificate Registration No. 1058  
AS/NZS ISO 9001: 2008



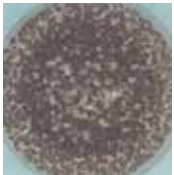
## Antimicrobial Protection via APEX Silver+ Stretch Cover ▼

Infection in a pressure ulcer can delay healing and may lead to other complications of pressure ulcers including pain, depression and death. Apex has carefully listened to the challenges posed by medical care environments, and proposes the new Silver+ Stretch cover. The cover is vapour permeable and water resistant and is working effectively against MRSA with its permanently silver-ion treated fabric.

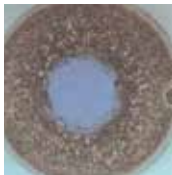
It kills 99.5% of the germs even after 40 cycles of high temperature washing (95). The cover has passed cytotoxicity, irritation and sensitisation tests. It also conforms to BS 7175, source 5 for the high flame retardant standard. The Silver+ Stretch cover reduces the bio-burden in the patient's environment, and helps with the cross-infection control.



### Result from mould and fungus resistance test



Control



Sample test



Fungistatic



Flame resistant



Silver-ion treated



Vapour permeable



Water resistant



2-directional stretch



Biocompatibility



### True Low Air Loss

Provides good ventilation and helps reduce the accumulation of heat and moisture.



### Two way zipper

Reduces ingress of unwanted fluids. Cover can also be completely removed for laundering and replacing.



### Cable management

Five loops on the side of mattress for managing cable if applicable.



### Easy storage

With snap fit buckle strap and power cord storage, the system can be wrapped into a compact size for storage.



### Easy to store

Hanger and power cord storage.

## True low air loss and alternating replacement system ▼

SERENE is a low air loss system that combines true low air loss and dynamic alternating pressure together. Patients no longer have to sacrifice one therapy for another.

With large air flow and a moisture vapour permeable Silver+ Stretch cover, the system can reduce the risk of infection and prevent maceration and moisture build-up, ensuring a patient will receive comfortable and high quality nursing care. SERENE has user-friendly controls, with quick and easy set-up, which makes the system ideal for use in the institutional and home environments.

### Static mode

Pressure redistribution through process of immersion. Redistributing body mass over a greater surface with pressure lower than alternating mode.



### Alternating mode

Avoids long term pressurisation. 1-in-2 alternating cell cycle achieves periodic pressure relief.



Power on/off

Panel lock

Cycle time:  
5, 10, 15, 20  
minutes

Alarm mute for  
low pressure/  
power failure/  
technical  
support

10 patient weight  
levels by digital  
controls

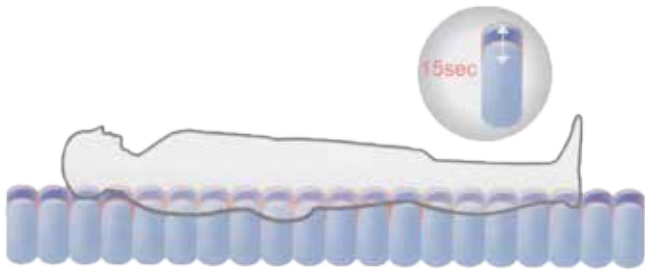


### Max firm

For nursing and rehabilitation. Inflate to its firmest level with maximum stability. It will return to previous setting after 20 minutes.

### Pulsation mode

Encourages body circulation. Periodically increases and decreases the whole mattress every 15 seconds to encourage lymph and blood flow for increased oxygenation.



### Seat inflate mode + static mode

For stable support in seating position. Support with additional pressure to redistribute pressure centralised at sacrum area and avoid excessive sinking while sitting.



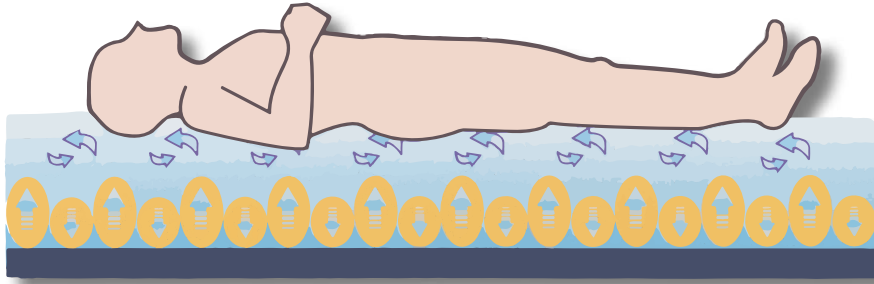
## Specifications

	Model	Serene
Pump	Dimension	31.2 x 26 x 16 cm
	Weight	5 kg
	Case material	Flame retardant ABS
	Supply voltage	AC 230V/50Hz; 120V/60Hz
	Operating cycle	5, 10, 15, 20 minutes (selectable)
Mattress		8" (20cm) overlay + 4" (10cm) foam pocket
	Dimension	200 x 90 x 20.3 cm
	Cell height	20 x 8" (20cm) cells
	Weight	7.5 kg
	Cover material	Silver+ 2-directional stretch
	Cell material	Nylon/TPU
	Maximum patient weight	180 kg (alternate mode) / 200 kg (static mode)

- \* Optional 2-directional stretch cover is also available.
- \* The airflow output may vary slightly due to different electrical voltage and frequency.
- \* A handy carry bag is provided with each system.

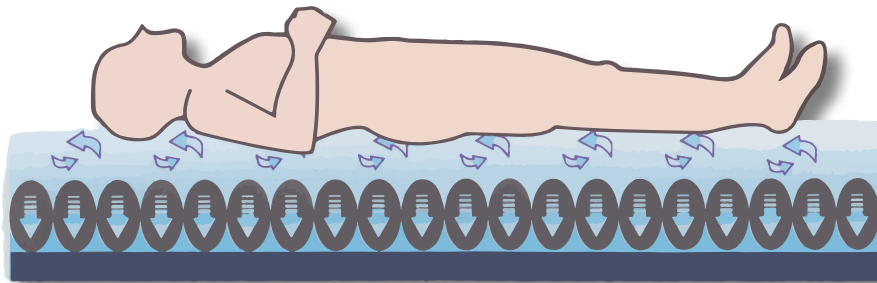


## True low air loss system with dynamic alternating pressure therapy mode ▼



### Adjustable alternating pressure

The system achieves periodic pressure removal by deflating half of the air cells, to mimic the change of position or posture. The effect causes the blood vessels to open fully rather than half close, and thus virtually guarantees blood flow. With a 1-in - 2 cell cycle, such sufficiently long period of pressure relief allows tissue oxygen to recover to the 'normal' level.

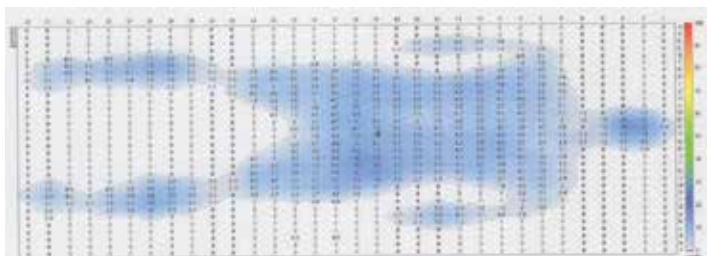


### 'TRUE' low air loss

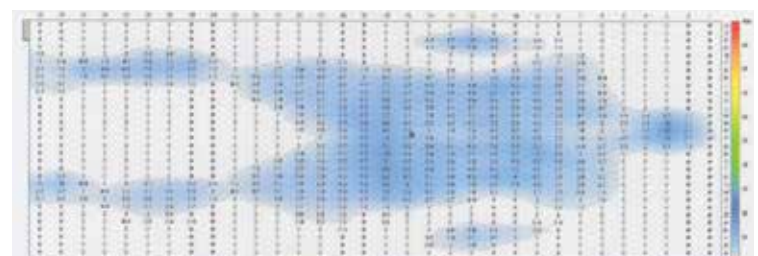
The system attempts to address the areas of high contact pressure, such as those of bony prominences, by redistributing the body mass over a greater surface area. As the therapeutic support surface is softened and more of the body comes into contact, the mass is redistributed more evenly, resulting in a decrease in contact pressure.

### Male/180cm/70kg Interface pressure profiles generated in different modes on APEX SERENE

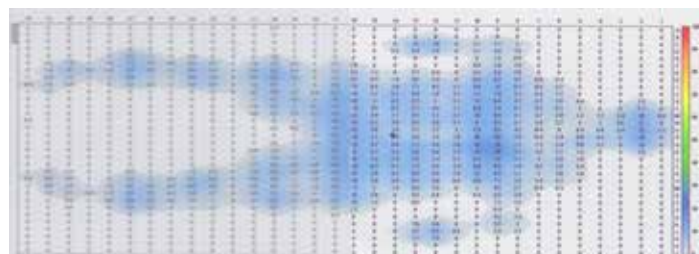
Static



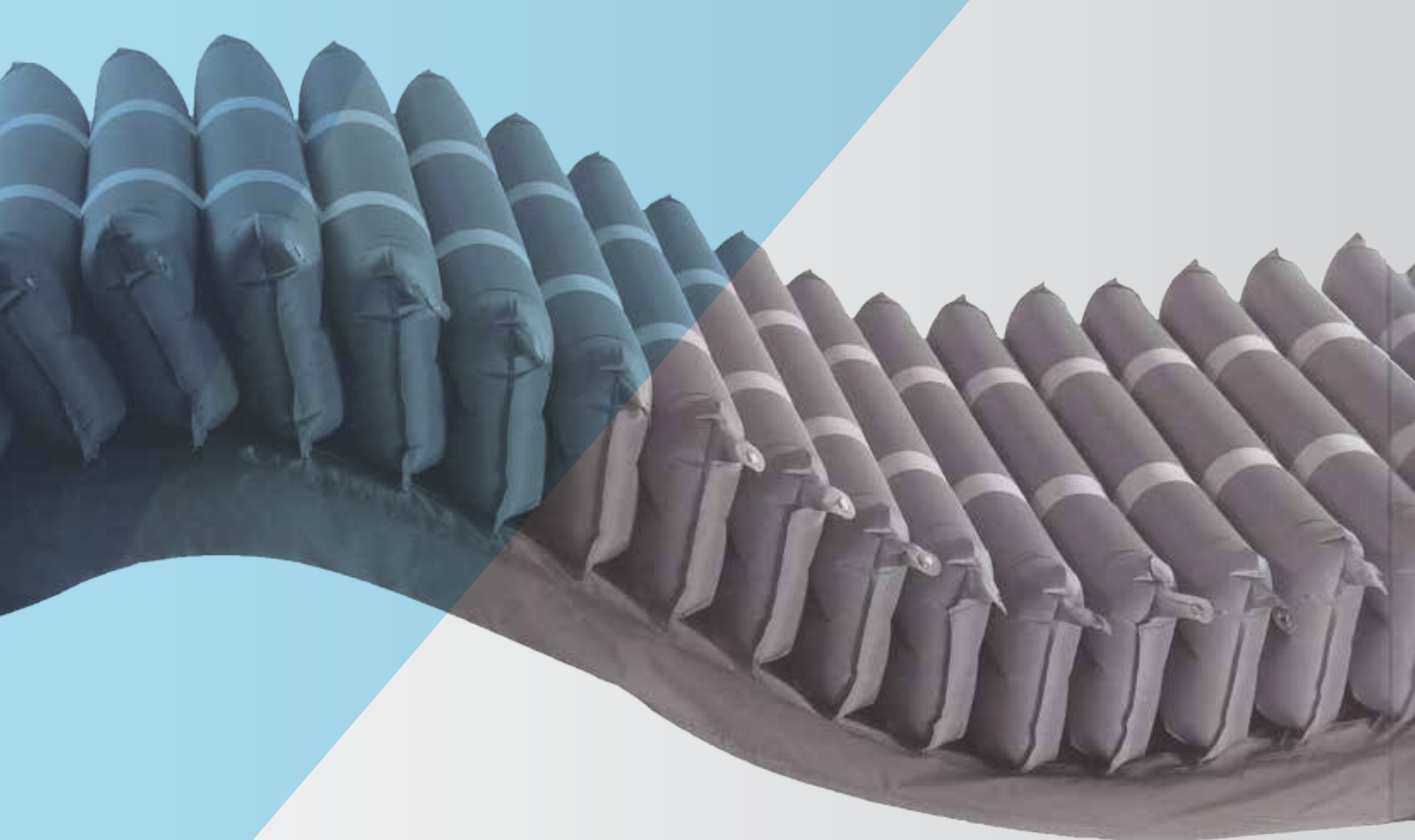
Pulsation



Alternating







**Sexton Trading Company Pty. Ltd.**

ABN 68 009 829 485

72 Crockford Street,

NORTHGATE QLD 4013

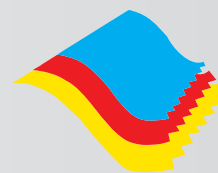
PO Box 135 Hamilton Qld 4007 Australia

**Telephone: (07) 3265 9999**

Facsimile: (07) 3260 6079

Email: [sales@sexton.com.au](mailto:sales@sexton.com.au)

**[www.sexton.com.au](http://www.sexton.com.au)**



**SEXTON**

Quality Management System  
Certificate Registration No. 1058  
AS/NZS ISO 9001: 2008